

Oakridge Community Trails Plan & Pump Track Update

Presented by Oakridge Trails Alliance and City of Oakridge Parks & Community Development
Advisory Committee to include updates from South Willamette Solutions



Who/What is Oakridge Trails Alliance?



2008 Oakridge Westfir Community Trails Plan

List of City of Oakridge connections identified in plan included:

- Canal or “Flume” Trail *(project #23)*
- USFS Salt Creek connection to Eugene to Crest / Aubrey / Heckletooth *(project #48 & 49)*
- Train Trestle Bridge and rails to trails connection from Uptown *(project #7)*
- Salmon Creek levy and access to Greenwaters under Hwy. 58 *(project #21)*
- Mill Ponds *(project #22)*

Oakridge-Westfir Community Trails Plan

The Oakridge-Westfir Community Trails Committee
and the Oakridge-Westfir Area Chamber of Commerce
with assistance from the National Park Service Rivers, Trails and Conservation Assistance Program



Community Trail System Conceptual Model

Figure 1. Community trail system conceptual model.

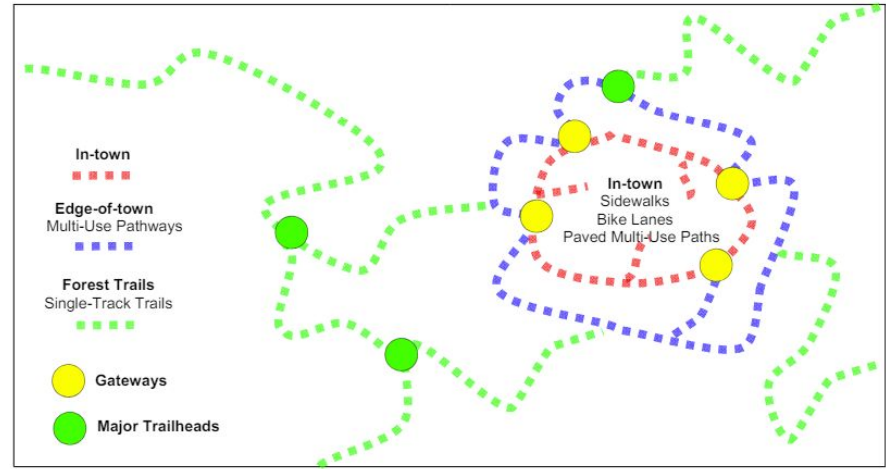
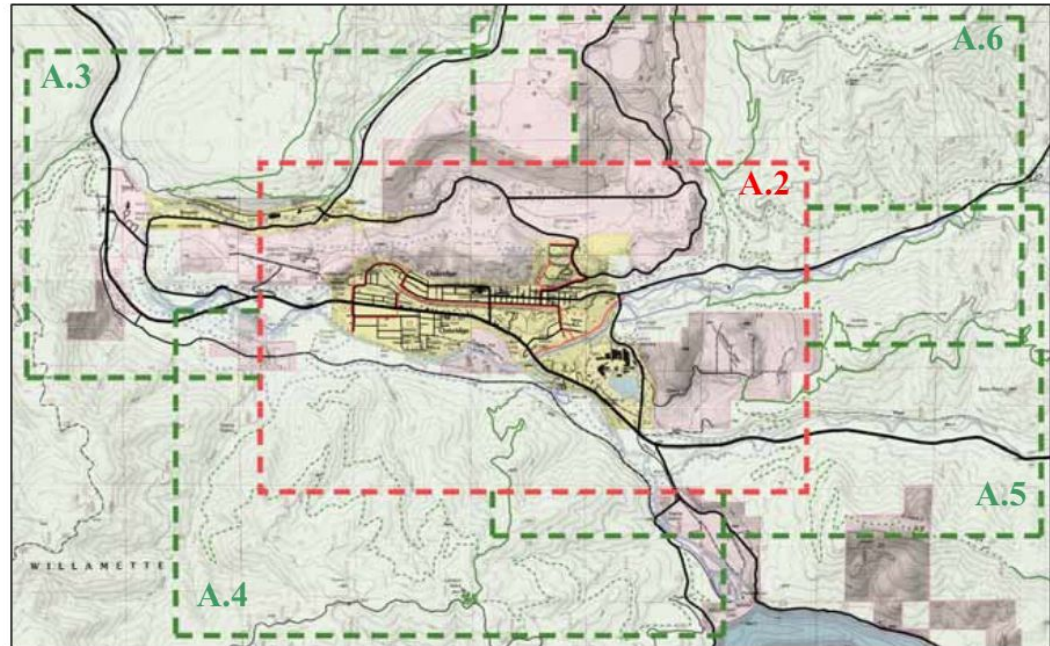


Table 2. Trail Categories in the Oakridge-Westfir Community Trails Plan.

| Trail Category | Description |
|----------------|---|
| In-town | Routes that link points within the community such as parks, neighborhoods, commercial centers and schools. These routes could include sidewalks, bike lanes, or multi-use pathways. |
| Edge-of-town | Routes that are generally at the periphery of the urbanized area. Trails in this category connect the community to recreation opportunities on the Willamette National Forest and connect the communities of Oakridge and Westfir. These routes would be multi-use paths of compacted gravel or bark mulch. |
| Forest Trails | Forest Trails are routes in the Willamette National Forest that provide a natural experience and variety of levels of physical challenge. These trails are typically a single-track type. They are compacted dirt and can vary from flat to steeper grades. |

| | | |
|-----|--------------------------------|---------|
| A.1 | Overview Map | Page 35 |
| A.2 | Oakridge Area Map | Page 36 |
| A.3 | Northwest – Westfir Area | Page 37 |
| A.4 | South – Larison Ridge Area | Page 38 |
| A.5 | East – Aubrey Mountain Area | Page 39 |
| A.6 | Northeast – Dead Mountain Area | Page 40 |

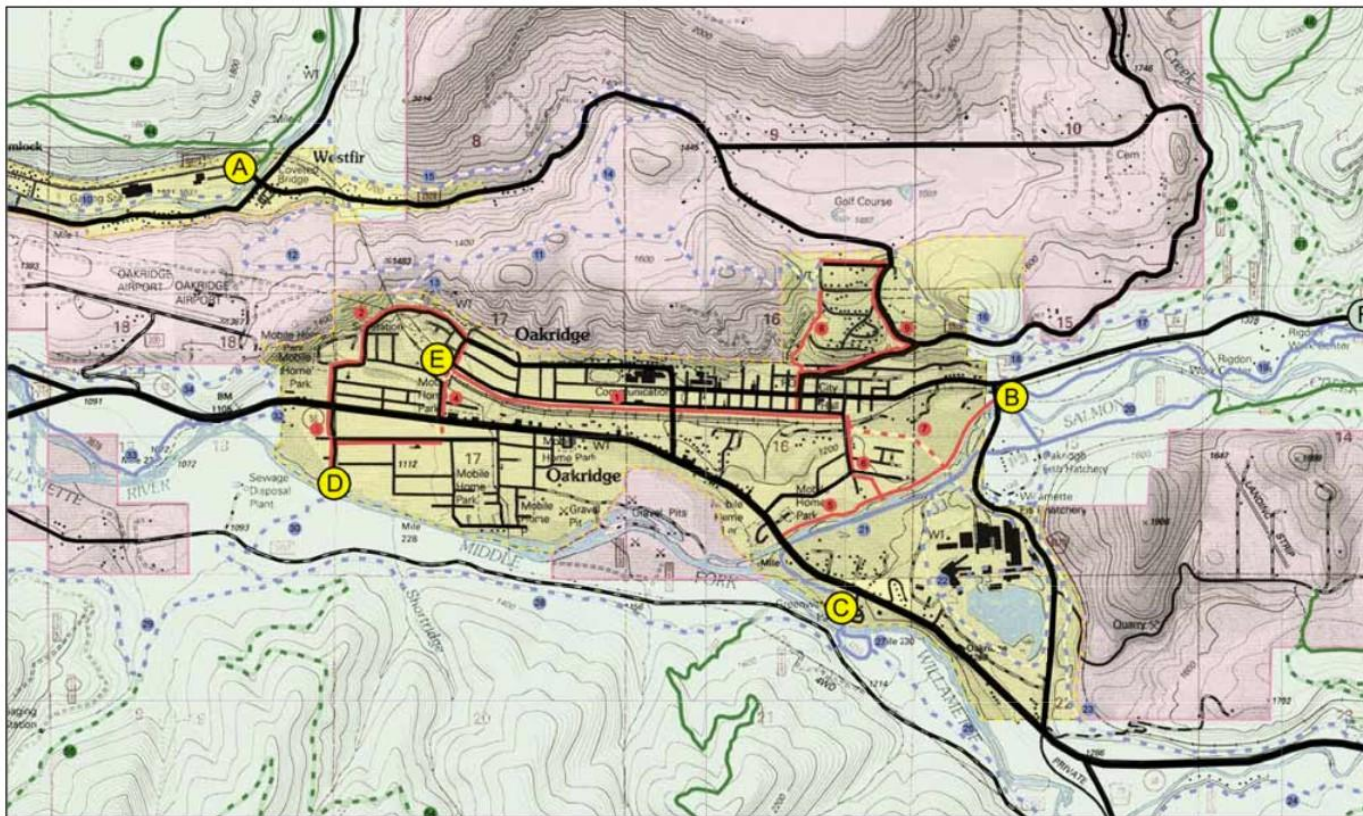
Figure 2. Plan area map showing five study areas.



Source: Oakridge-Westfir Community Trails Plan, 2008, Pg. 15

Greater Oakridge Area Trails Network

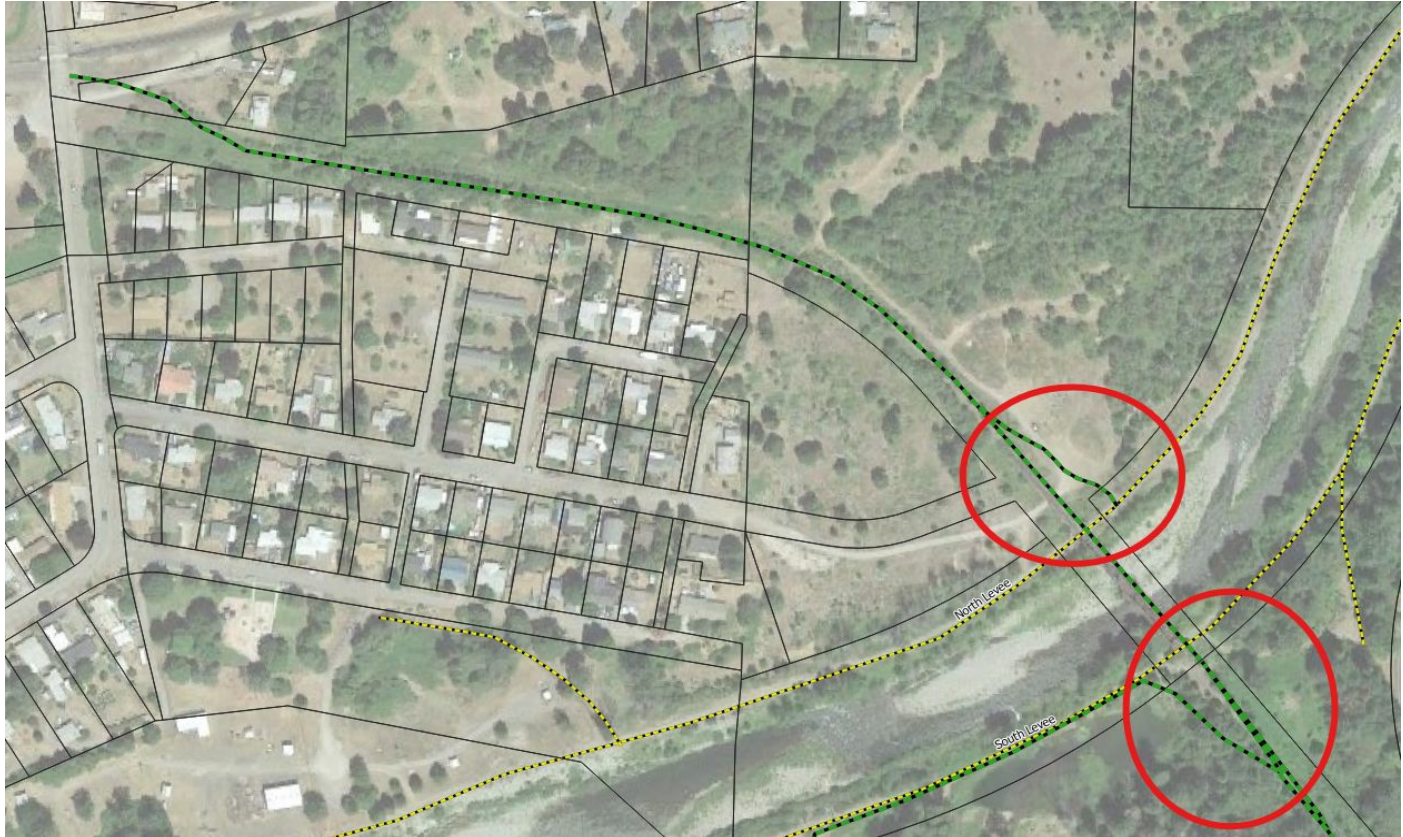
A.2 Oakridge Area Map



In Town & Edge of Town Connections Listed in Plan

- Warrior Fitness Trail / Salmon Creek *(project #19)*
- The Industrial Park Trail Loops and Salmon Creek South Levee Trail *(project #21 & 22)*
- Canal / Flume Trail *(project #23)*
- Eugene to Crest Trail (50) and Aubrey Mountain Trail *(project #50 & 49)*
- Salmon Creek Levy to Greenwaters *(project #48)*
- Train Trestle Rail Line: Uptown to OIP *(project #7)*
- Diamond View Park *(project #E)*

Rails to Trails Conversion



Source: Oakridge Mill Park Plan 2019 GIS data & QGIS

Easement Options to Enhance Connectivity



Source: Oakridge Mill Park Plan 2019 GIS data, Easements dated 10-31/18, 6-30-20 & QGIS

Optimal Connectivity Across the OIP

Table 5.4 – Trail System Linkages

| Trail | Classification | Intended Purpose |
|----------------------------|----------------|---|
| Salmon Creek Levy - North | In-town | Connect the in-town trail network through Salmon Creek Park to Greenwaters Park and the Edge of Town trail network. |
| Salmon Creek Levy-South | Edge of Town | Connect the edge of town trail network through Salmon Creek Park to Greenwaters Park and the in-town trail network. Coordination needed with the Salmon Creek Park and Greenwaters Park design plans. |
| Osprey Connector | In-town | Provide a trail link between Osprey Park and Diamond View Park. The connection to Osprey may conceivably provide linkage through the park to a future bridge across the Willamette connecting with forest trails. Coordination with the Osprey and Diamond View design plans. |
| Industrial Park Trail Loop | Edge of Town | Connects to the Salmon Creek Gateway, to Greenwaters Park, and to popular forest service trails, such as the Flat Creek Trail. Coordination needed with Greenwaters and Salmon Creek design plans and the Mill Pond design plan. |

Source: City of Oakridge Parks Master Plan 2011, pg. 38



Source: Oakridge Mill Park Plan 2019 GIS data & QGIS

Mill Park Plan 2019

Oakridge Mill Park

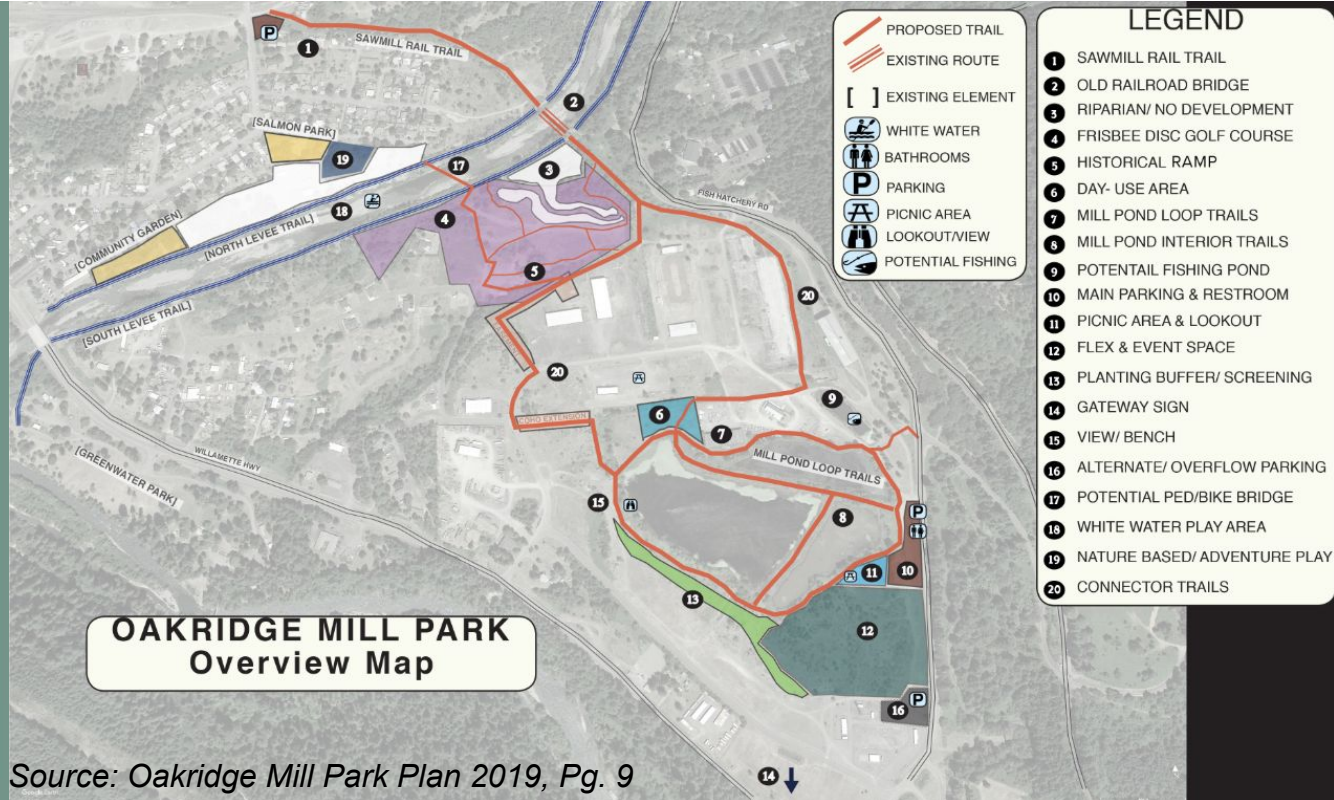
Concept Plan
Fall 2019



City of
Oakridge,
Oregon

Technical
assistance
provided by

SPS RYCA
Sustainable Planning
Resources & Community
Assessment



Source: Oakridge Mill Park Plan 2019, Pg. 9

Where are we now?

Current Projects Underway:

- Trestle Bridge Study
- Salmon Creek Levee (invasive cleanup)
- Oakridge Disc Golf Course at the Old Mill Park
- Mill Pond Trails & OIP Connections
- Flume (Canal) Trail & Bridge Feasibility Study
- Tharp Memorial Bridge (plank replacement)
- OIP Pump Track
- Diamond View Bike Skills Park



*Source: Railroad Spur Clean up,
Staff Photo, 2019*

Trestle Bridge Feasibility Study

Request for Proposal closed today, next step is for the Bridge Committee to review.

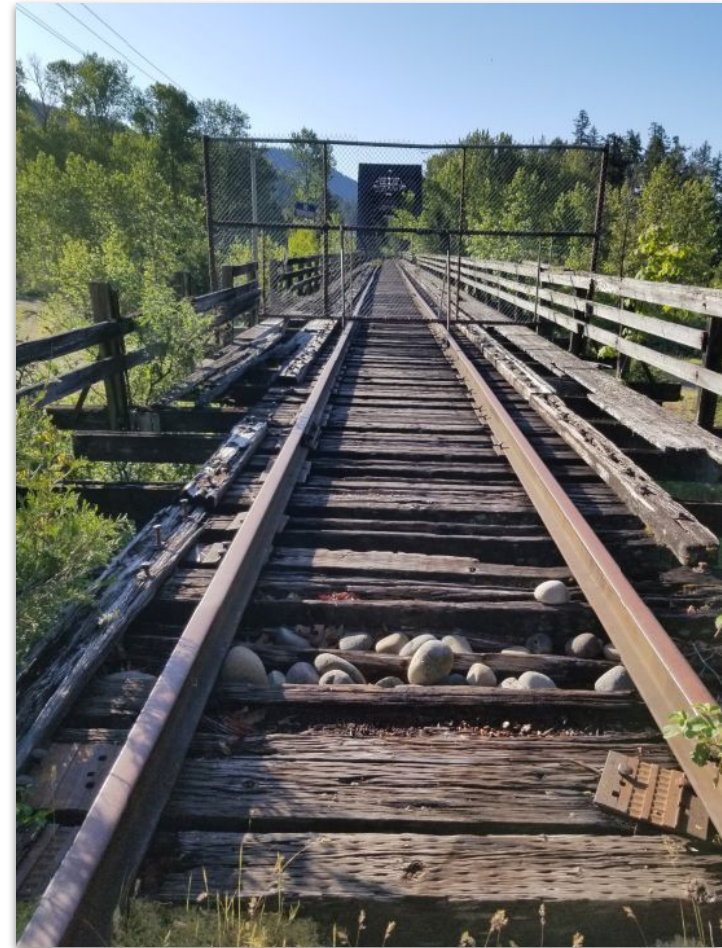
This project can be found in;

2008 Oakridge Westfir Community Trails Plan
(project #7)

Oakridge Mill Park Plan 2019 *(project #2)*

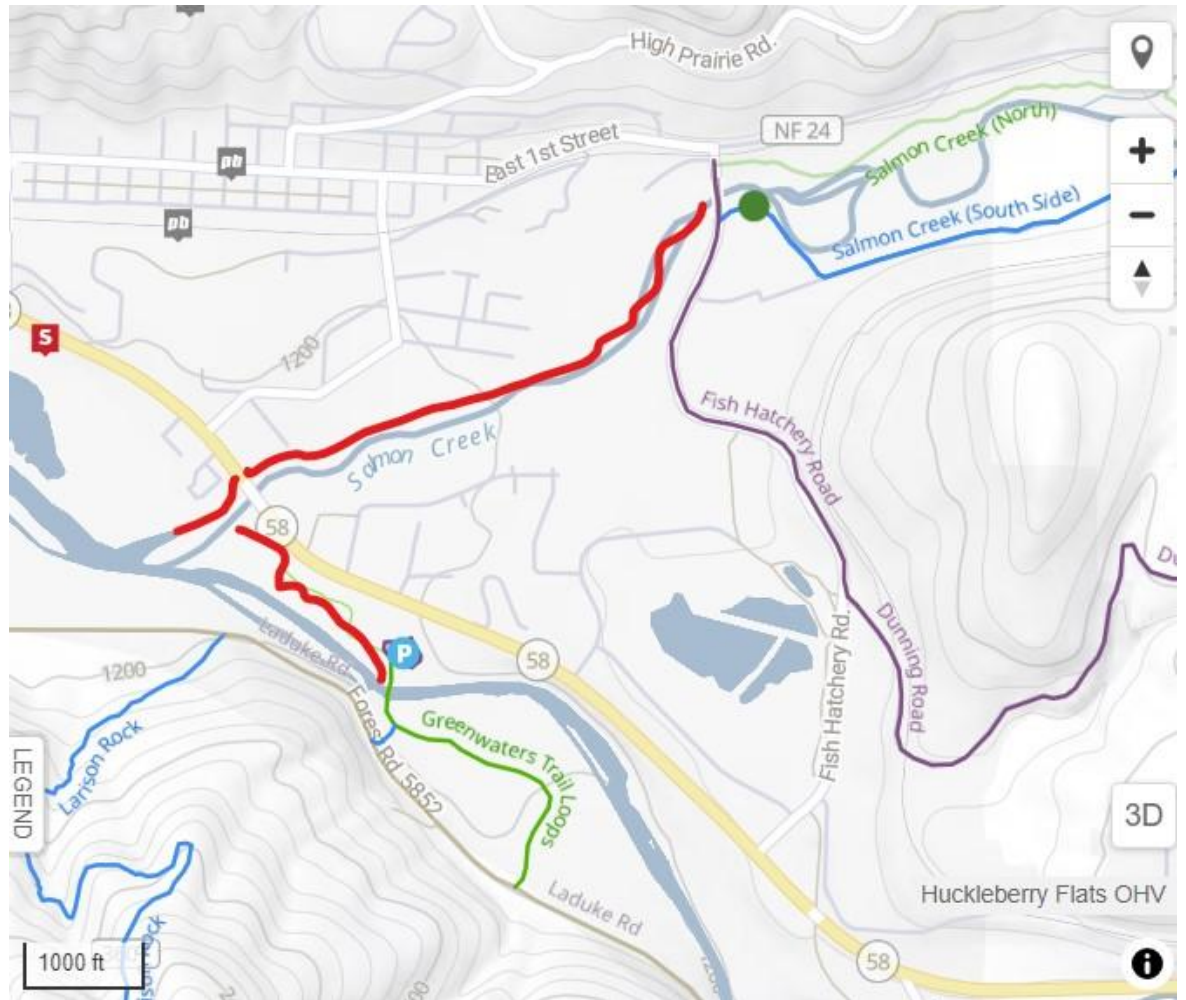
City of Oakridge Parks Master Plan 2011 *(Pg. 24)*

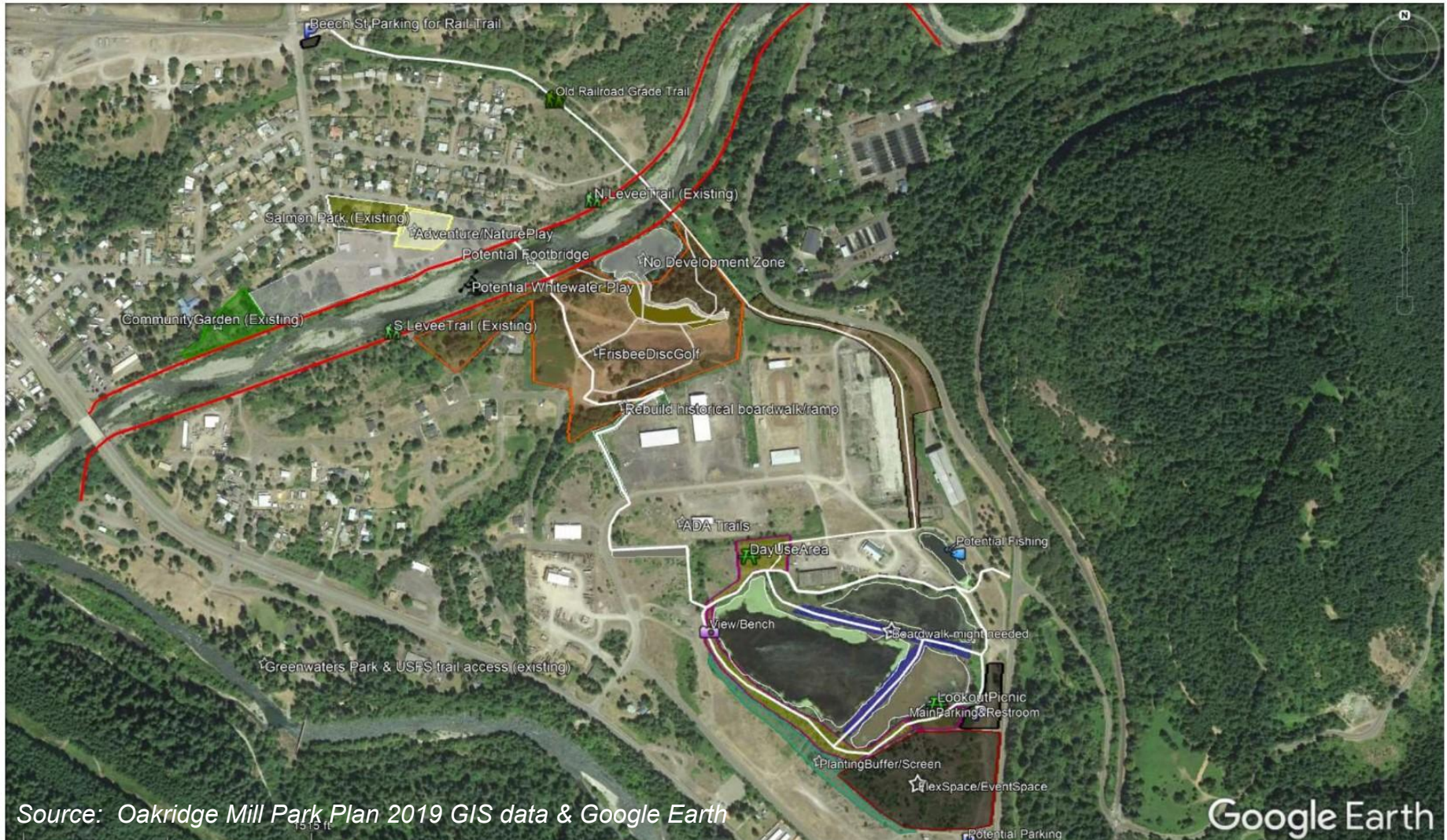
Oakridge TSP 2020 *(Pg. 52, & 53)*



Source:, Staff Photo, 2019

Salmon Creek Levees





Source: Oakridge Mill Park Plan 2019 GIS data & Google Earth

Google Earth

Old Mill Park Disc Golf Course

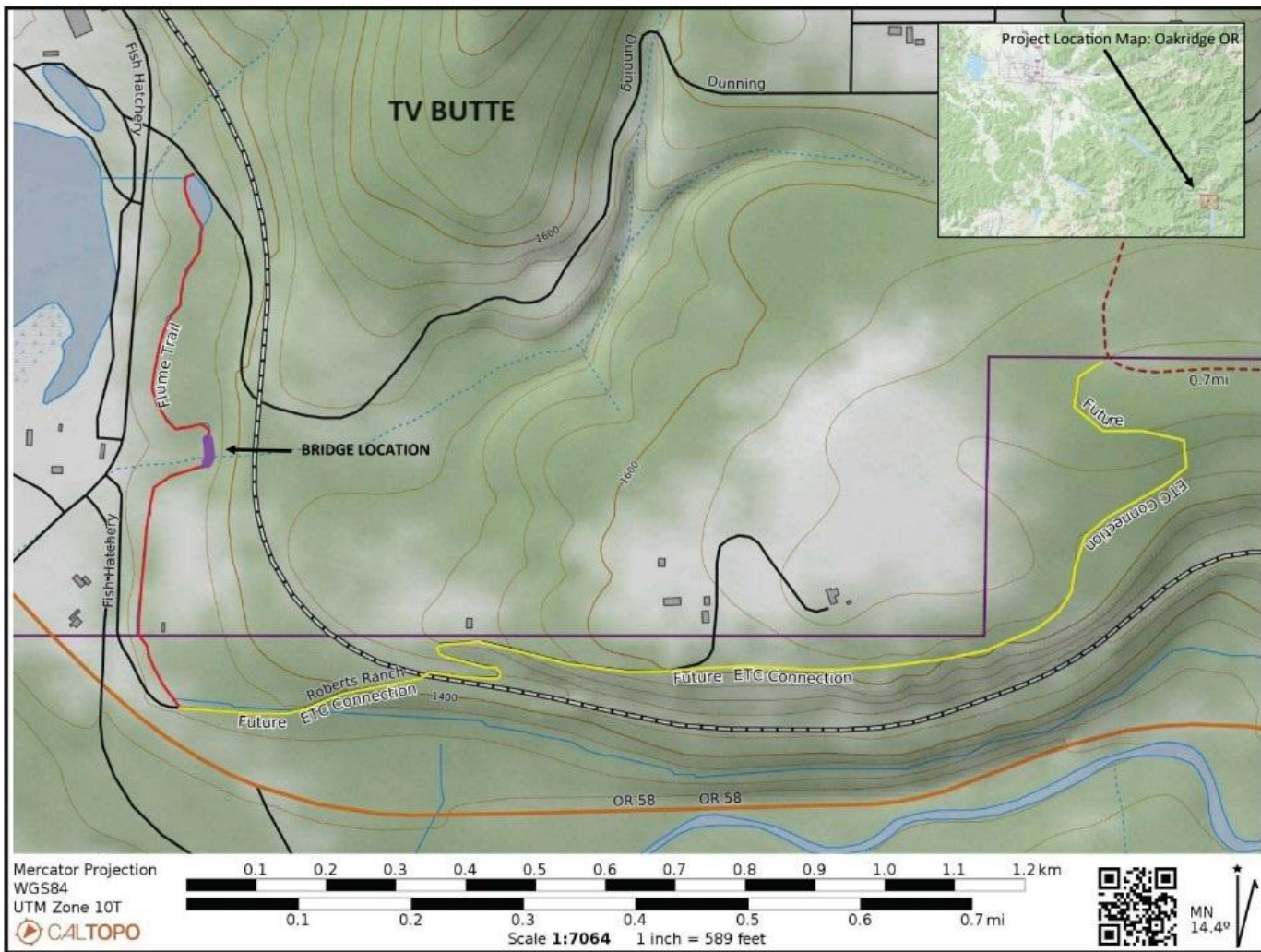


OIP & Mill Pond Trails



Flume Trail (aka: Canal Trail)





Tharp Memorial Bridge: Plank Replacement



Source: Oakridge
Wayfinding Plan, 2014, Pg.



OIP Pump Track



Diamond View Park

Oakridge Parks Master Plan on pg. 15, 23, 30, & 34



Other potential planning activities on the horizon

Talks regarding the use for Side by Side staging have resumed with partners from SxS groups with the desire to utilize the flex space identified in the Mill Park Plan for events by the Side by Side community.





*not to be interpreted as a potential design

Comments, Questions

Contact Info

Rick Zylstra, City of Oakridge - Planning, rickzylstra@ci.oakridge.or.us

Michelle Emmons, Oakridge Trails Alliance, michelle@oakridgetrailsalliance.org

Tom Lyons, Parks and Community Development Committee,
thomaselliottlyons@gmail.com

Sarah Altemus-Pope, Southern Willamette Forest Collaborative
sarah@swfcollaborative.org