



Southern Willamette Forest Collaborative Wildfire Risk Reduction Projects 2022-2023

We are pleased to announce that the Southern Willamette Forest Collaborative (SWFC), through South Willamette Solutions, the nonprofit that oversees SWFC, has received four grants to reduce wildfire hazardous fuels in the Oakridge-Westfir area. Oregon Dept. of Environmental Quality (ODEQ) and Oregon Department of Forestry (ODF) have approved funding for projects which will treat up to 300 acres on private lands. (See table)

Projects activities will pay for invasive species removal, reimbursement for fuels reduction work, thinning small understory trees, prescribed fire, and more. The work will be largely done by Inbound LLC and crews from ODF and Northwest Youth Corps. The Laurel Butte, Dunning Road, and LaDuke road areas have been identified as priority areas for fuels reduction by previous Firewise assessments. These areas have large, densely wooded and brushy areas that pose a high hazard to homes and infrastructure during fire season.

- Oregon State University School of Forestry is providing recommendations for where to prioritize fuels reduction treatments for each project area.
- The DEQ Project will remove hazardous fuels from 50' off of Oakridge city boundary to Laurel Butte. Slash will be chipped or donated to the Community Firewood program, providing an alternative to burning.
- The Laurel Butte project will remove hazardous fuels from this major ridgeline between Oakridge and Westfir. The goal is to treat 150 acres for invasive weeds, ladder fuels along boundaries and roads, and thin overstocked stands.
- The Dunning Road project will use similar treatments to the Laurel Butte project removing ladder fuels and invasives such as blackberries.
- The Firewise grant for the greater Oakridge-Westfir area firewise community will help individual homeowners reduce wildfire risk to the property around their homes. Unfortunately, due to the rules of the grant, this funding is not available for homes within Oakridge City Limits.

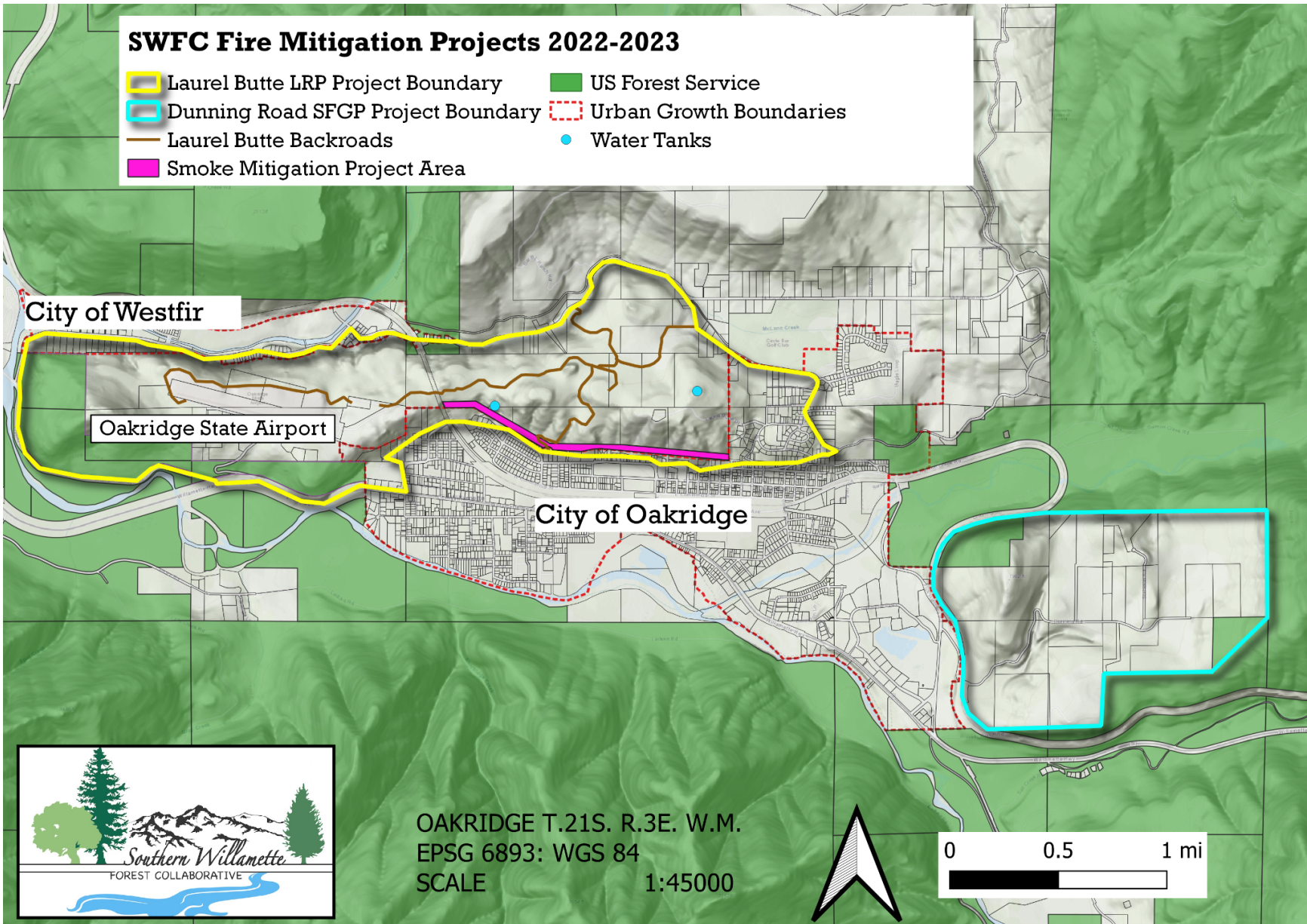
All projects must be completed by June of 2023. We are identifying high-risk areas and homes located outside of Oakridge City limits. If you are interested in assistance, please [fill out this form](#), contact staff@swfcollaborative.org, or call 541-782-3422. Sharing your information DOES NOT mean we can guarantee funding for your property.

2022-2023 Fuels Reduction Projects Table

Project Name	Grantor	Acres Treated	Type of Treatments	Estimated Timeline	Location
Oakridge-Westfir Ridgeline Fuels Reduction and Community Firewood Alternatives to Burning Project	ODEQ	24 ac	Ladder Fuels Removal, Invasive Removal, Chipping and Firewood use	March 2022 - May 2023	Ridgeline bordering the north boundary of Oakridge
Laurel Butte Landscape Resiliency Project	ODF (Landscape Resiliency Program)	150 ac	Shaded fuel breaks, Invasive removal, pre-commercial thinning	April 2022 - June 2023	Laurel Butte (Ridgeline Between Westfir and Oakridge)
Dunning Road Fuels Reduction Project	ODF (Small Forestlands Grant Program)	130 ac	Pre-commercial thinning, Invasive Removal, Rx Fire, Oak Restoration	April 2022 - June 2023	Properties around Dunning and Roberts Ranch roads, east of Oakridge
Oakridge-Westfir Firewise USA Grant	ODF (Small Forestlands Grant Program)	10-100 ac	Landscape and home hardening, improving defensible space, invasive removal, general fuels reduction	March 2022- June 2023	Greater Oakridge-Westfir, LaDuke Road

SWFC Fire Mitigation Projects 2022-2023

- Laurel Butte LRP Project Boundary
- Dunning Road SFGP Project Boundary
- Laurel Butte Backroads
- Smoke Mitigation Project Area
- US Forest Service
- Urban Growth Boundaries
- Water Tanks



OAKRIDGE T.21S. R.3E. W.M.
EPSG 6893: WGS 84
SCALE 1:45000

