



## Lookout/Horse Creek/Pothole Fires/Bedrock

September 3, 2023

### Morning Update

**Lookout: Total Personnel: 645**

**Size: 24,526 acres | Start Date: August 5, 2023 | Cause: Lightning | Containment: 20%**

**Resources: 31 engines | 12 crews | 9 bulldozers | 30 water tenders | 7 masticators | 12 helicopters**

Fire activity continued to be minimal on the Lookout Fire Saturday. Today, on the east side firefighters will continue to work on the area where burnout operations occurred along the Highway 126 corridor and continue to work on the spot fires across the highway. The west side still holds significant heat and will be patrolled and monitored, with continued prep work on contingency lines. Tree fallers, fire crews, and heavy equipment will continue preparing fuel breaks along forest system roads to be used as primary and alternate control lines on the north side of the fire. Smoke will continue to impact the McKenzie drainage along Highway 126.

**Horse Creek: Size: Total Personnel: 213**

**Size: 763 acres | Start Date: August 24, 2023 | Cause: Lightning | Containment: 12%**

**Resources: 24 engines | 4 crews | 4 bulldozers | 9 water tenders | 4 masticators**

Yesterday firefighters continued strengthening and improving completed fire lines by seeking out and extinguishing hotspots. The eastern most point of the fire is in steep rugged terrain and will be monitored. With minimal fire behavior expected today, crews will be extinguishing and removing burning material along completed fire lines. Firefighters continue to prep contingency lines. Smoke is expected to impact drainages due to creeping and smoldering fire behavior.

**Pothole: Size: Total Personnel: 103**

**Size: 109 acres | Start Date: August 25, 2023 | Cause: Lightning | Containment: 15%**

**Resources: 6 engines | 2 crews | 1 bulldozers | 3 water tenders | 3 Skid**

Firefighters continue to make good progress on the Pothole fire which showed little activity yesterday. Today Firefighters will maintain established fire lines and continue to secure the perimeter.

**Bedrock: Total Personnel: 463**

**Size: 31,590 acres | Start Date: July 22, 2023 | Cause: under investigation | Containment: 85%**

Pockets of unburned fuel continued to burn and produce smoke yesterday with minimal fire growth. Two suppression repair groups have been established to continue returning disturbed areas back to their natural state by grading, installing water bars, and re-contouring dozer lines. A Suppression group will continue to work on open lines on the west side, provide initial attack capabilities and continue to assist the Willamette National Forest with nearby fires. Excess fire equipment is being removed and returned to base camp for servicing and cleaning.

### All Fires

Fire damaged trees and saturated soils along control lines combine to create an extreme hazard to firefighters and equipment. Prior to entering work areas, expert tree fallers identify and mitigate (fall) these weakened trees to reduce the risk of them coming down and causing serious injuries or fatalities. Firefighters and law enforcement officers maintain a presence in evacuated areas. Trained firefighters are flying Unmanned Aerial Systems (UAS) through the smoke to provide infrared heat imaging to locate hotspots near control lines and provide accurate mapping. Firefighters are ready to respond to any new fire starts that may occur due to lightning. Mopping up describes the process of

extinguishing or removing burning material near control lines down to the mineral soil, felling fire damaged trees, and cooling ash pits to make a fire line less likely to escape or to reduce residual smoke.

#### **Weather**

Scattered thunderstorms yesterday resulted in multiple lightning strikes and produced some rain up to 0.10 inches over the fires. Today will be cooler with slightly higher humidity. Fire activity is expected to remain minimal with little fire expected over the next several days mostly due to the recent rain and higher humidity.

**Evacuation Centers:** An evacuation center is in place at Westridge Middle School in Oakridge for evacuees and small pets from the Horse Creek and Lookout Fires. For assistance with large animal evacuations, please call 541-285-8227.

**Evacuation Update:** No changes have been made to Evacuation Order. Information can be found at the following websites.

**Lane County Evacuations:** <https://www.lanecountyor.gov/cms/one.aspx?pageld=19729054>

**Linn County Evacuations:** <https://www.linnsheiff.org/>

#### **Road Closures:**

Highway 242, McKenzie Highway, is closed between milepost 61-76, 14 miles west of Sisters, Oregon to just east of the junction with Highway 126. Highway 126 is currently open. Please monitor Trip Check for any updates at:

<https://tripcheck.com/>

**Forest Closures:** Willamette National Forest reduced the closure area for the Bedrock fire due to successful firefighting efforts. Many popular sites and trails have re-opened including the Alpine Trail. There are no changes to closure areas for the Lookout, Horse Creek, and Pothole fire areas at this time. These closures help provide firefighters with safer driving conditions and decrease the potential for search and rescue operations that could interrupt firefighting activities. Closures can be found at: <https://www.fs.usda.gov/detail/willamette/alerts-notice/?cid=fseprd552029>

**Restrictions:** Fire Restrictions are in place on the Willamette National Forest: <https://www.fs.usda.gov/willamette>. [Temporary Flight Restrictions](#) remain in place over the Bedrock and Lookout fire areas.

**Smoke Outlook:** <https://outlooks.wildlandfiresmoke.net/outlook/4c92bc1a> The [Fire and Smoke Map](#) (fire.airnow.gov) is another source for air quality information.

**Lookout Information Line:** 541-215-6735 (8 a.m. - 8 p.m.)

Email: [2023.lookout@firenet.gov](mailto:2023.lookout@firenet.gov)

Facebook: <https://www.facebook.com/LookoutFire2023>

Inciweb: <https://inciweb.nwcg.gov/incident-information/orwif-lookout-fire>

**Bedrock Fire Information:** 541-414-6272 (8 a.m. - 8 p.m.)

Email: [2023.bedrock@firenet.gov](mailto:2023.bedrock@firenet.gov)

Facebook: <https://www.facebook.com/BedrockFire2023/>

InciWeb Bedrock: <https://inciweb.wildfire.gov/incident-information/orwif-bedrock-fire>



# Smoke Outlook

West-Central Oregon - Lookout and Bedrock Fire

9/03 - 9/04

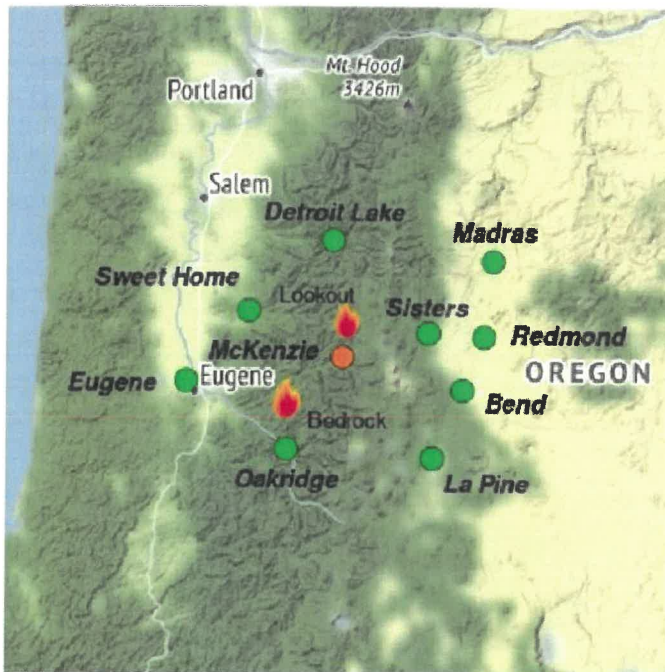
Issued by Wildland Fire Air Quality Response Program on September 03, 2023 at 07:49 AM PDT

## Fire

The Lookout Fire is 24,526 acres with 20% containment. The Bedrock Fire is 31,590 acres with 85% containment. Latest fire information is available at InciWeb: [tinyurl.com/Fire-Information](https://tinyurl.com/Fire-Information)

## Smoke

Air quality for most of the forecast area will be pleasant through the holiday weekend. The continued westerly winds and clearing of smoke yesterday means that we will likely continue to see GOOD air quality in Central Oregon. The one exception, McKenzie, being near the fire will likely have USG air quality today. The air quality in Detroit Lake and Sweet Home should remain GOOD. Eugene and Sisters will continue to see GOOD air quality for most of the day with brief periods of MODERATE in the evening hours.



Daily AQI Forecast\* for Sunday

Station	Yesterday			Sat 9/02	Comment for Today – Sun, Sep 03	Forecast*	
	6a	noon	6p			Sun 9/03	Mon 9/04
Oakridge					GOOD air quality with periods of MODERATE in the afternoon.		
La Pine					Air quality will be GOOD for the area.		
Bend					Air quality will be GOOD with potential brief periods of MODERATE		
Detroit Lake					GOOD air quality will continue in the area.		
Sweet Home					GOOD air quality is expected.		
Redmond					Air quality should continue to improve in Redmond GOOD air is expected.		
Madras					GOOD air quality in the area today.		
Sisters					GOOD air quality expected today with brief period of MODERATE		
Eugene					Eugene could see GOOD with periods of MODERATE in the afternoon.		
McKenzie					Air quality is expected to be MODERATE with periods of USG in the evening.		

Issued Sep 03, 2023 by Wendy Wagner ARA ([wendy.wagner@usda.gov](mailto:wendy.wagner@usda.gov)) & V.J. Maisonet (ARA trainee)

Air Quality Index (AQI)	Actions to Protect Yourself
Good	None
Moderate	Unusually sensitive individuals should consider limiting prolonged or heavy exertion.
USG	People within Sensitive Groups* should <b>reduce</b> prolonged or heavy outdoor exertion.
Unhealthy	People within Sensitive Groups* should <b>avoid all</b> physical outdoor activity.
Very Unhealthy	Everyone should avoid prolonged or heavy exertion
Hazardous	Everyone should avoid any outdoor activity.

\*Disclaimer: This forecast is based on fine particulates only; ozone is not included. Forecasts may be wrong; use at own risk. Use caution as conditions can change quickly. See your health professional as needed. Smoke sensitive groups should take appropriate precautions.

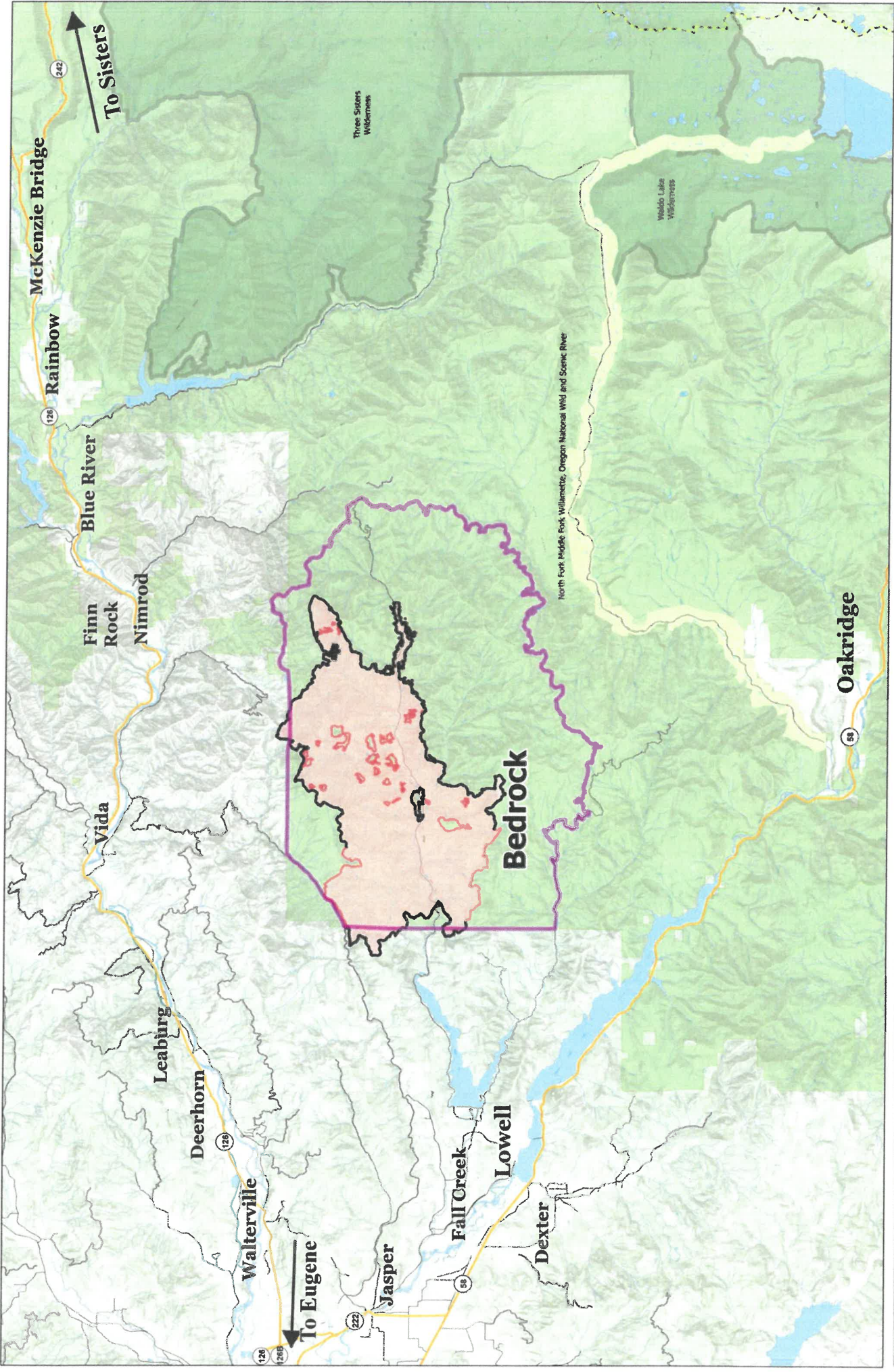
### Additional Links

AirNow Fire & Smoke Map -- <https://fire.airnow.gov>  
Oregon Smoke Bbg -- <https://oregonsmoke.org>

Oregon Health Authority Community Wildfire Resources -- <https://www.oregon.gov/oha/ph/preparedness/prepare/pages/prepareforwildfire.aspx>



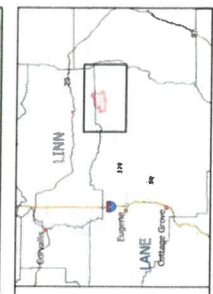
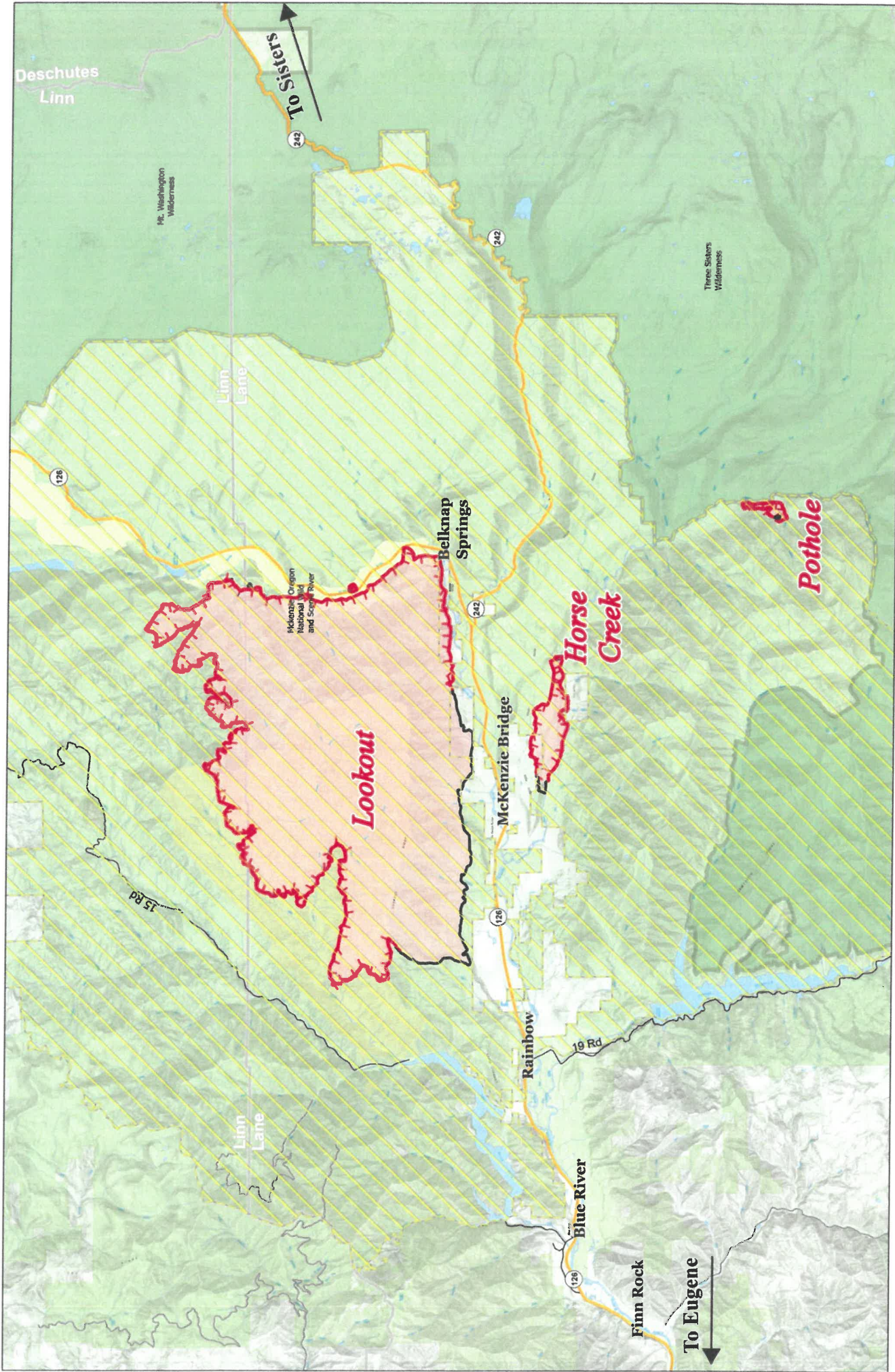
Issued by Interagency Wildland Fire Air Quality Response Program -- [www.wildlandfiresmoke.net](http://www.wildlandfiresmoke.net)  
West-Central Oregon Updates -- <https://outlooks.wildlandfiresmoke.net/outlook/959d2520>  
\*Smoke and Health Info -- [www.airnow.gov/air-quality-and-health](http://www.airnow.gov/air-quality-and-health)



9/2/2023 2:100  
 Acres from IR & GPS  
 North American 1983 Datum, Lat,Long  
 Grid  
 0 2.5 5  
 Miles

- Fire Area
- Contained
- Closure Area Located on USFS Lands Only
- Wilderness
- WildlandScenicRiver

**Information**  
 Bedrock  
 ORWIF-230266  
 09/03/2023  
 31,590 acres as of 9/1/2023 @ 2227  
 Acres from IR & GPS



9/2/2023 2053  
 Acres from IR & GPS  
 North American 1983 Datum, Lat/Long  
 Grid



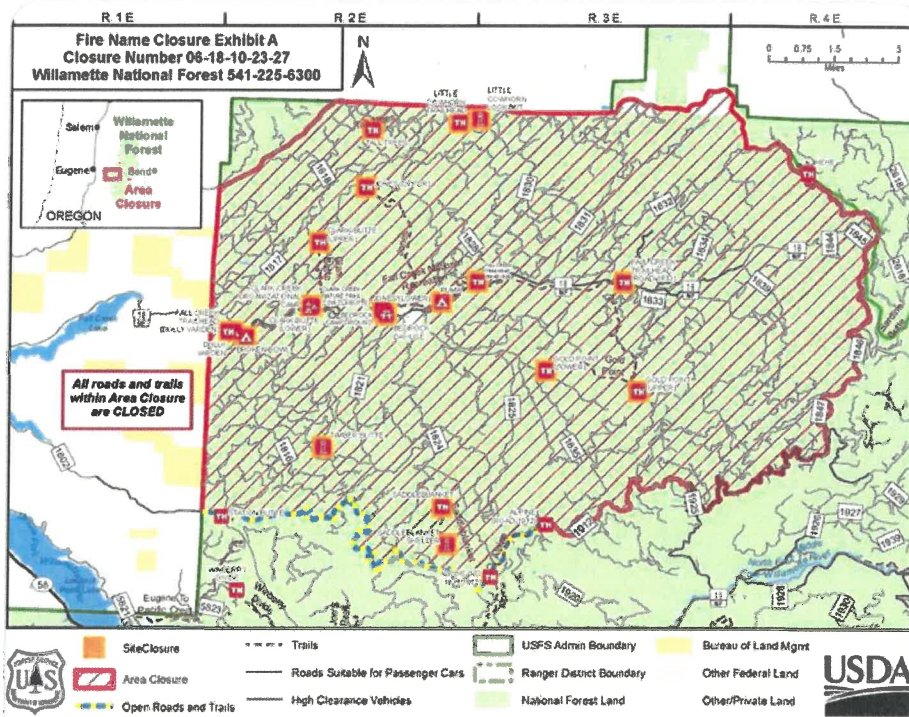
- Closure - Area
- Contained
- Uncontained
- Fire Area
- Wild and Scenic River
- Wilderness
- H. J. Andrews Experimental Forest

**Information**  
 Lookout  
 ORWIF-230327  
 09/03/2023  
 24,526 acres at 9/1/2023 @ 2137  
 Acres from IR & GPS



### Bedrock Fire 2023

September 1 at 8:13 AM · 🌐



### U.S. Forest Service - Willamette National Forest

August 31 at 12:07 PM · 🌐

**CLOSURE REDUCTION:** Officials reduced the closure area for the BEDROCK FIRE on Aug. 31, 2023 due to successful firefighting efforts. Many popular sites and trails that were closed by the old Bedrock closure are now open, including the full length of the Alpine Trail (#3315). Follow [Bedrock Fire 2023](#) for latest information.

#### OPEN Trails, Trailheads, and Recreation Sites

- ✅ Indian Ridge Trail #3315
- ✅ Alpine Trail #3450
- ✅ Station Butte Trail #3471
- ✅ Hehe Mountain #3475
- ✅ Joe's Peak Trail #3482
- ✅ Sardine Butte Trail #3564
- ✅ North Fork Segment #2 Trail #3666.2
- ✅ Indian Ridge Lookout
- ✅ Apline Trailhead (Road 1825 and 1912)
- ✅ Hehe Trialhead
- ✅ Indian Ridge Trailhead (Lower and Upper)
- ✅ Joe's Peak Trailhead
- ✅ North Fork (Road 1912) Trailhead





**🚫 CLOSED Campgrounds**

- Bedrock Campground
- Blue Pool Campground
- Broken Bowl
- Dolly Varden
- Puma

**🚫 CLOSED Trails**

- Johnny Creek Nature Trail #3454
- Clark Creek Nature Trail #3456
- Clark Butte Trail #3456.1
- Clark/Fall Tie Trail #3456.2
- Gold Point Tie Trail #3468.1
- Saddleblanket Trail #3487
- Tall Trees Trail #4269
- Fall Creek National Recreation Trail #3455
- Big Meadows Loop Trail #3456
- Cowhorn Mountain Trail #3458
- Gold Point Trail #3468
- Jones Trail #3472

**🚫 CLOSED Trailheads**

- Alpine (Road 1825)
- Saddleblanket Trailhead
- Station Butte Trailhead
- Alpine Trailhead (Road 1912)
- Clark Butte Trailhead (Lower and Upper)
- Clark Creek Nature Trail Trailhead (Low Clk Butte)
- Fall Creek Trailhead (Dolly Varden)
- Fall Creek Trailhead (Road 1828)
- Fall Creek Trailhead (Road 1833)
- Gold Point Trailhead (Lower and Upper)
- Hehe Trailhead
- Jones Trailhead (Lower and Upper)
- Little Cowhorn Trailhead

**🚫 CLOSED Recreation Sites**

- Saddleblanket Shelter
- Timber Butte
- Bedrock Day Use
- Clark Creek Organizational Camp
- Little Cowhorn Lookout

**i** Read full closure:

[https://www.fs.usda.gov/.../FSE\\_DOCUMENTS/fseprd1125705.pdf](https://www.fs.usda.gov/.../FSE_DOCUMENTS/fseprd1125705.pdf)

The Willamette National Forest is currently in Level 3 Fire Restrictions, IFPL III, and "very high" danger rating. More information: <https://www.fs.usda.gov/main/willamette/fire>.

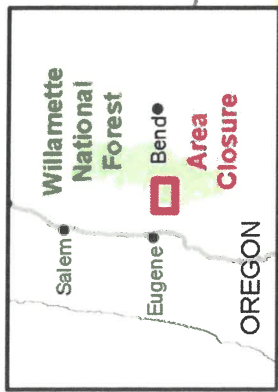


R. 1 E. R. 2 E. R. 3 E. R. 4 E.

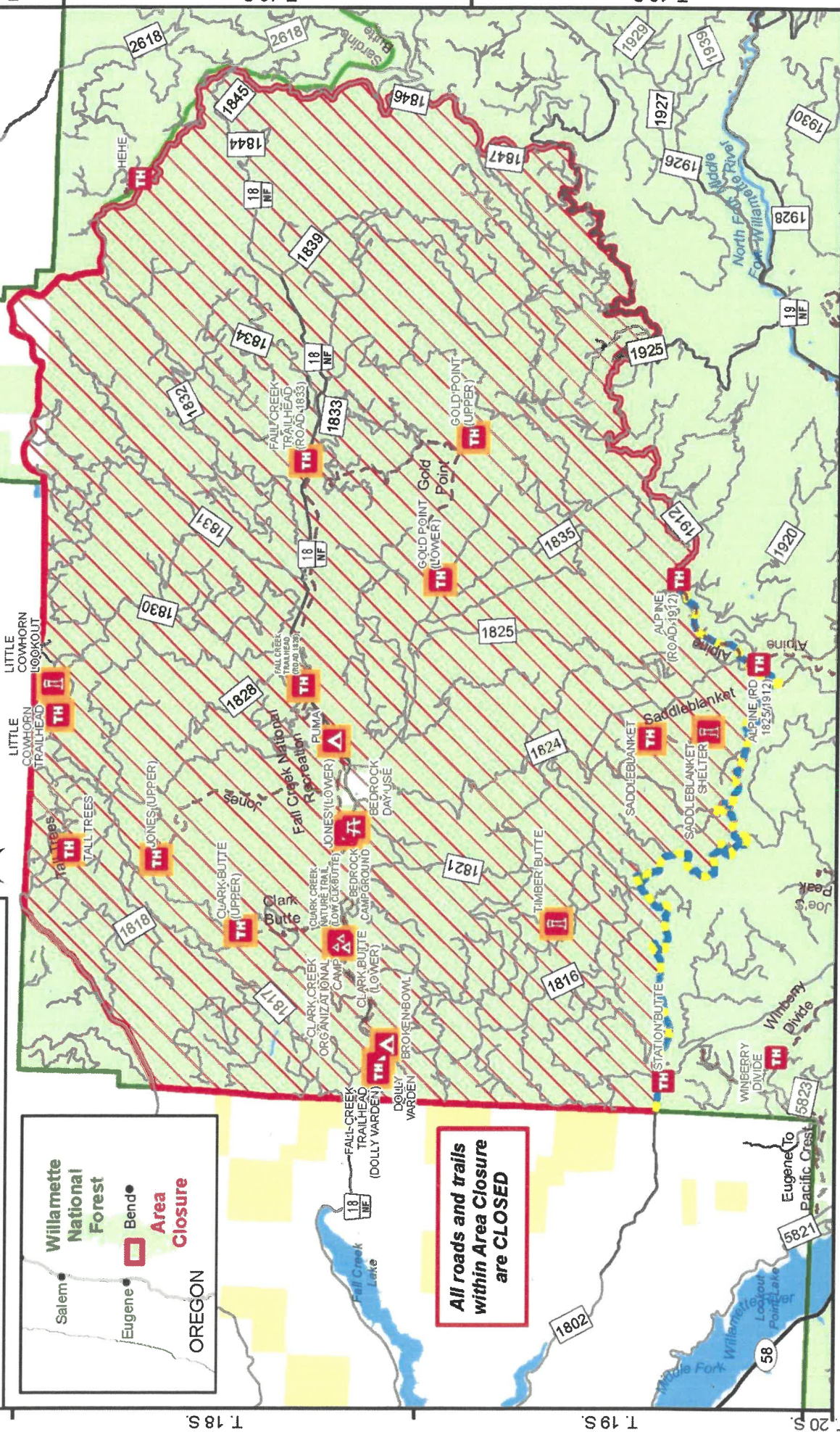
T. 17 S. T. 18 S. T. 19 S. T. 20 S.

0 0.75 1.5 3 Miles

**Fire Name Closure Exhibit A**  
**Closure Number 06-18-10-23-27**  
**Willamette National Forest 541-225-6300**



**All roads and trails within Area Closure are CLOSED**




Site Closure  
 Area Closure  
 Open Roads and Trails  
 Trails  
 Roads Suitable for Passenger Cars  
 High Clearance Vehicles  
 USFS Admin Boundary  
 Ranger District Boundary  
 National Forest Land  
 Bureau of Land Mgmt  
 Other Federal Land  
 Other/Private Land

