

# Planned Burning Week of October 16

## Pile Burn Rx

Units:

WUI 232 Acres (Hand/Machine Piles)

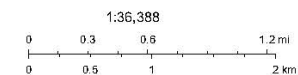
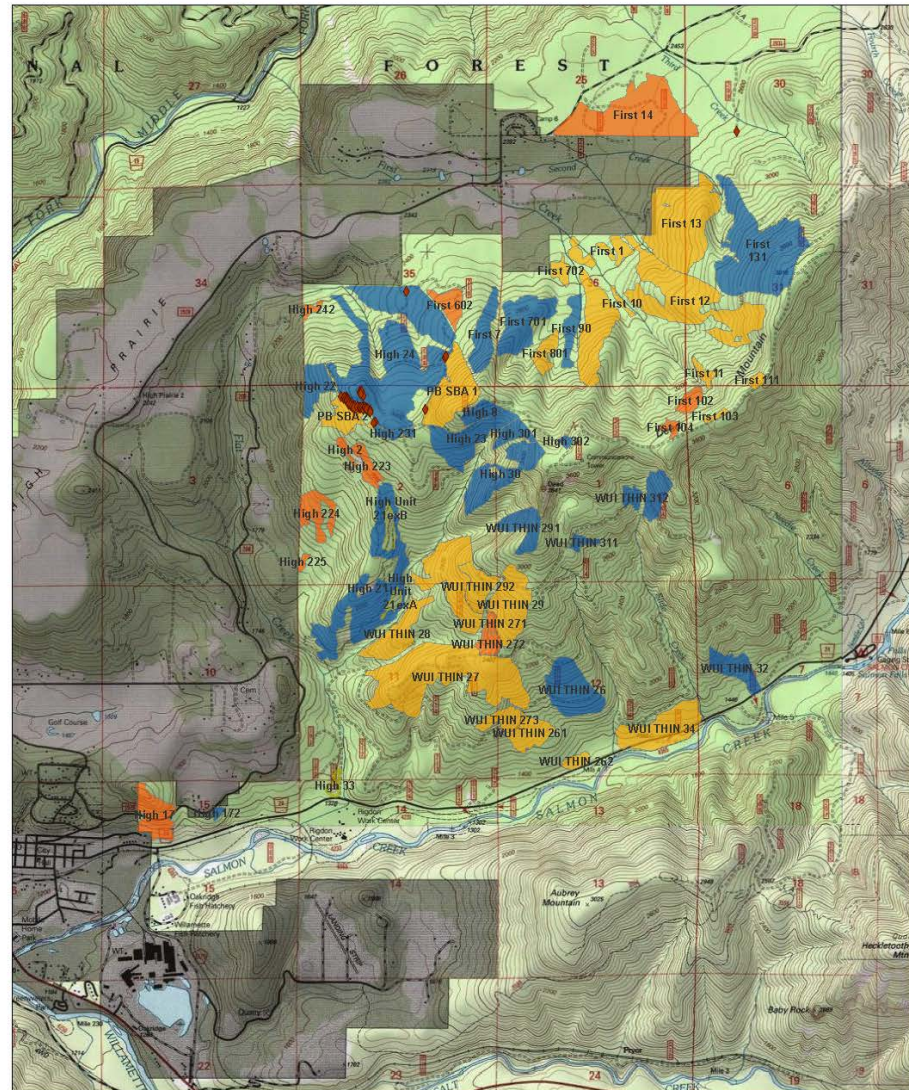
First 250 Acres (Hand Piles)

\*Units indicated as "covered" are the units being pile burnt.

The Middle Fork R.D. is planning to continue burning grapple and hand piles. Piles are located throughout the District. Many piles are located around the Wildland Urban Interface (WUI) and smoke may be visible from the cities of Oakridge and Westfir. We will complete test fires prior to full ignitions to determine if we should continue burning for the day. Ignitions can be expected to occur through the District over the next several weeks, with some residual, lingering smoke expected beyond the ignition phase.

Landscape treatments such as thinning create fuel loading inside of units that can create heightened fire behavior and mortality during wildfire events. Prescribed fire in these areas removes large concentrations of these fuels and builds resiliency in the stands. Fire applied under prescriptive parameters including flame height and spread, allow for a reduction of fuel under a favorable conditions. These treatments reduce the threat of future fire, help create healthy stands and are an imperative tool for fire managers.

MFRD Fuels Map



Copyright © 2013 National Geographic Society, Inc.