



## 71<sup>st</sup> Annual Grand Parade Application

**When:** Saturday, **May 4, 2024**, Parade Staging at the High School - **9:30 AM**, Parade Start: **11 AM**

**Application Deadline:** Wednesday, **May 1, 2024**, at **4 PM**

**Application Details:** Pick up and drop off applications at Oakridge City Hall (48218 E. 1st Street)

Monday to Thursday, 8AM-4PM, **or** print and email a scanned copy to Vanessa Tharp at

[president@owtreeplantingfestival.org](mailto:president@owtreeplantingfestival.org) with the subject line: **“TPF Parade Entry 2024.”**

**Questions:** Call or ideally text Vanessa Tharp at 541-913-0762 or email her at

[president@owtreeplantingfestival.org](mailto:president@owtreeplantingfestival.org)

**Parade Route:** Staging starts at the Oakridge High School, 47994 W. 1st Street, Oakridge, Oregon.

The parade will be escorted by the Oakridge Police Department and head east on E. 1<sup>st</sup> Street

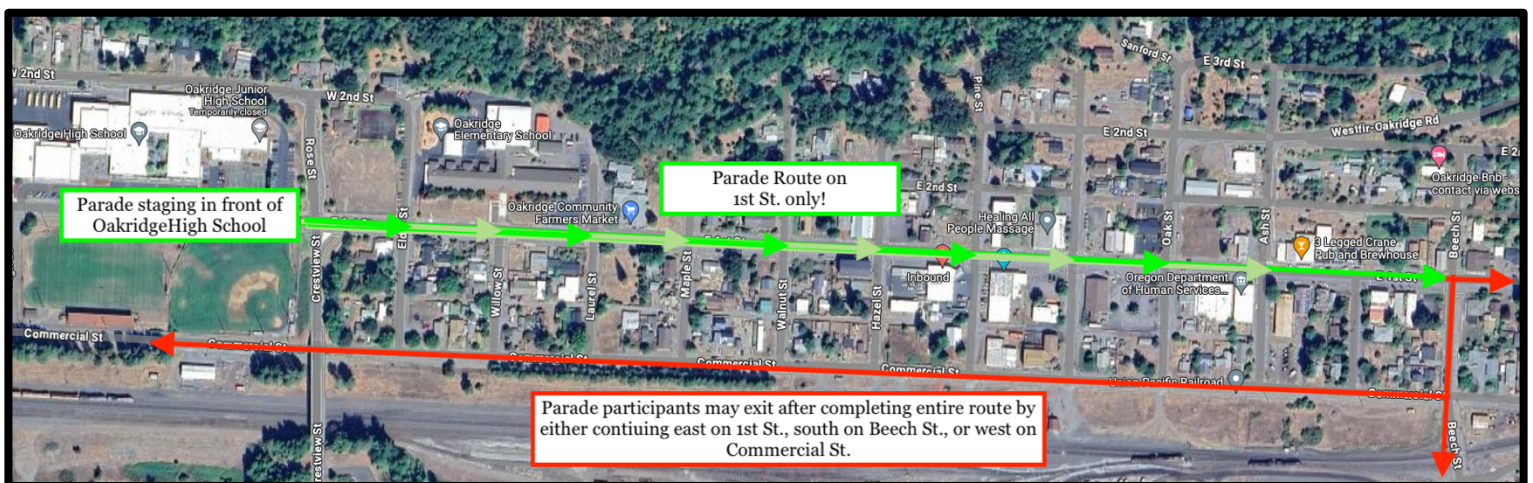
towards uptown Oakridge and then end at the intersection of 1<sup>st</sup> and Beech Street. Parade

participants may then depart the area by continuing east on 1<sup>st</sup> Street, south on Beech Street, or may

return to the High School by turning right (south) on Beech Street and then right (west) on

Commercial Street. Parade participants are not allowed to exit the 1<sup>st</sup> Street parade route early, as all

the side streets between the high school and Beech Street will be closed during the parade.





## 71<sup>st</sup> Annual Grand Parade Application

The following parade rules (as per TPF policies and [Oakridge City Ordinance 942](#)) will be enforced to make the parade a fun and safe experience for the community and participants:

- Parade entry is FREE, unless a political group - who are required to pay \$25. The details are below on payment methods. An optional and suggested \$10-25 donation can be made by any entry to participate in the parade and can be given to Vanessa as TPF President on the day of or sent to Banner Bank. All collected donations will go to the Tree Planting Account to offset event costs.
- Drivers must have a valid driver's license and car insurance and adhere to all traffic laws and parade rules.
- Drivers may not deviate from the parade route at any time and must finish the entire parade route.
- An "entry" may be the following: Car, truck, flatbed, float, side by side, off road vehicles, scooter, golf cart, walkers, bikers, horses, commercial vehicle, bus, or other safe and creative entry with TPF staff permission. Unsure - please ask us ahead of time.
- Use appropriate and proper signage to identify sponsors for entry if needed.
- Floats may not exceed 10 ft in width or 13.5ft. In height, trailers may be larger.
- Entries may use sound amplifications or musical purposes but may not address audience/community with speeches or campaigning and may not be louder than 80-90 decibels.
- Entries can be historical, business, non-profits, representing the community, or for fun or education - as long as they are in good taste as deemed by the Parade Chair and Oakridge Police Department.
- All entries with horses/pets must have someone to follow and clean up.
- Get creative and have fun with your entry - balloons, banners, decoration, giveaways, SWAG, coupons, costumes and more are all encouraged!
- **No items, including candy, may be thrown from vehicles** (as per [Ordinance 942](#)). Items and candy may only be *handed-out* by walkers during the parade. Please plan ahead to have walkers help hand out candy on your behalf.

### Next Steps:

1. Complete and return Application to Oakridge City Hall or Vanessa Tharp by Wed., May 1st.
  - a. \$25 political campaign fees or any donations must be paid in advance by check to: "Oakridge-Westfir Tree Planting Festival % C.F.A" mailed to: PO Box 67, Oakridge, OR 97463 or <https://bit.ly/donatetotpf>
2. Wait for email confirmation for your Saturday morning placement, these will be sent by Fri. May 3<sup>rd</sup>.
3. Communicate staging information to your entry participants. Arrive at Oakridge High School between 9:30-10:15 AM to get into place (be mindful streets will be closing).



## 71<sup>st</sup> Annual Grand Parade Application

Name of Entry Lead, Organization, Sponsor or Group: \_\_\_\_\_

Additional Contact Names: \_\_\_\_\_

Contact Email: \_\_\_\_\_ Cell Phone Number: \_\_\_\_\_

Estimated length of float/entry/vehicles in feet: \_\_\_\_\_

Detailed description of entry (Example: log truck, walkers with a sign, trailer decorated, side by side ATV, mountain bikes, golf carts, 1952 Chevy, etc.):

---

---

If Motorized Entry - Number of Vehicles: \_\_\_\_\_

Type of Vehicle(s) (motorcycles, horses, trucks, etc.): \_\_\_\_\_

Year/Make/Model/Owner: \_\_\_\_\_

*We will send application confirmation via email once we receive it in batched groups each week or so, please have patience. We will email out the parade line-up and staging plans on Fri. May 3rd.*

Optional: Title of Entry: \_\_\_\_\_

Is Music Part of the Entry? (Circle One) Yes      No

Political Entry? (Circle One) Yes      No



## 71<sup>st</sup> Annual Grand Parade Application

### REQUIRED EVENT WAIVER:

*I/we hereby waive and release any and all rights/claims of any nature that I/we may have against the Tree Planting Festival grand parade, their employees, officers, volunteers, contractors, agents, assigns, licensees and cooperating entries for and against any and all injuries and damages of any nature which I/we may suffer while taking part in any activities connected with this event as a whole. This release shall be binding upon my/ours heirs, executors, and/or assigns. Entries must observe all applicable rules and regulations. TPF staff and/or the Oakridge Police Department reserve the right to remove participants from the parade at any time if they are not obeying the parade rules and regulations or are refusing to follow instructions from the police or parade officials. All entries must be in their assigned positions on time in order to participate. I/we have read and agree to abide by all Grand Parade Guidelines and will adhere to all safety rules, laws, and directions from the Tree Planting Festival and City of Oakridge Police Department - keeping safety as our first priority.*

Name: \_\_\_\_\_

Signature: \_\_\_\_\_ Date: \_\_\_\_\_

Driver's Insurance Company/Policy:

\_\_\_\_\_

Sponsor/Business/Organization:

\_\_\_\_\_