

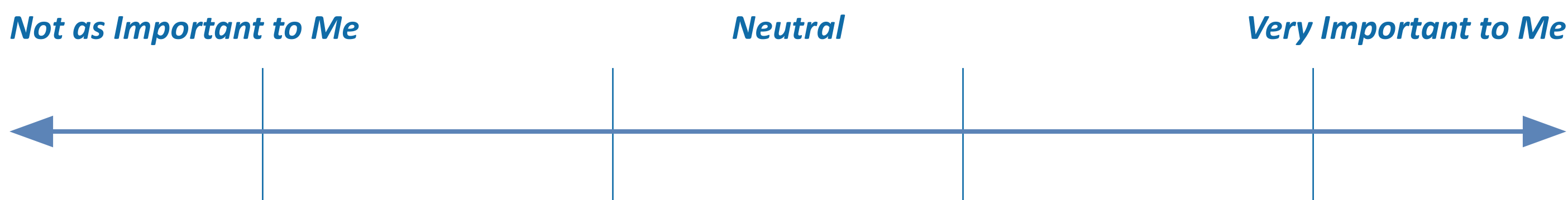


MULTIMODAL TRANSPORTATION

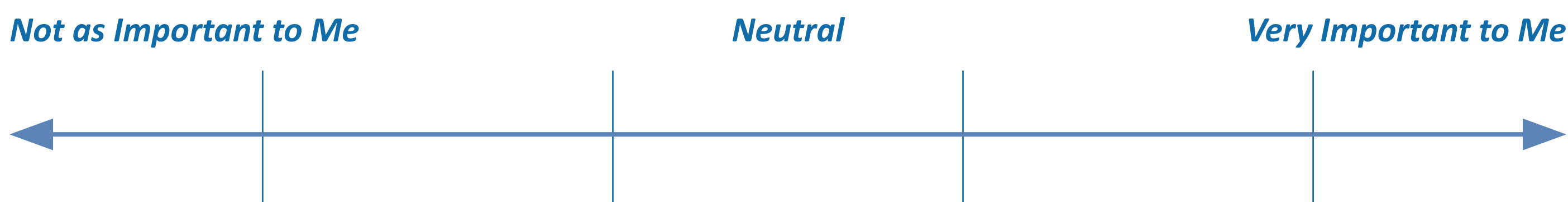
How important are each of following topics to you?

Place a dot along the line in the spot that best reflects your view.

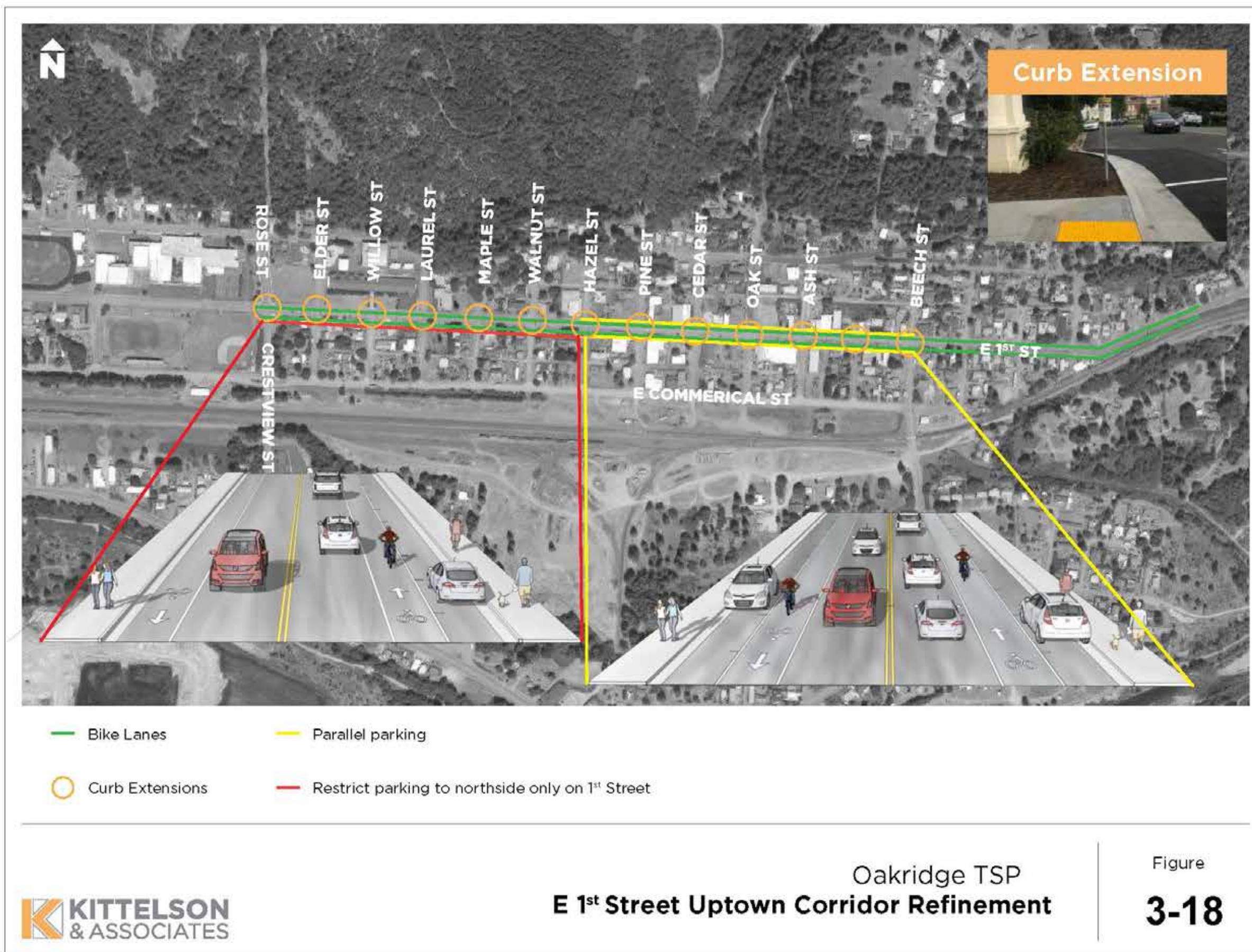
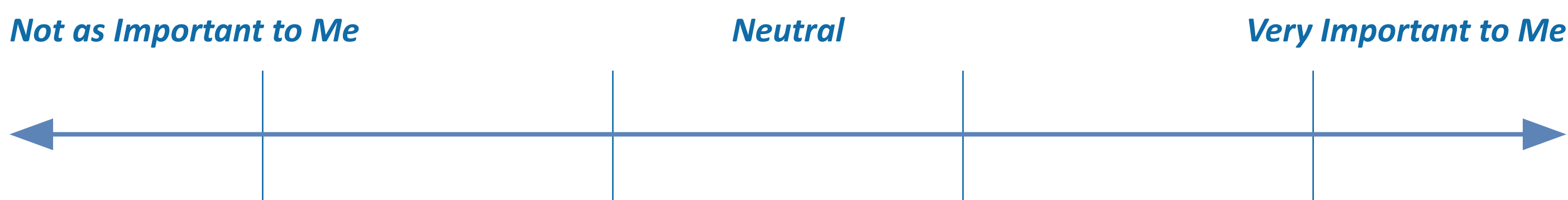
Improving the safety of walking, biking, and rolling (e.g., scooters, mobility devices) along and across Hwy. 58.



Improving bike and pedestrian connectivity around town through more trails, bike lanes, and sidewalks.



Reconfiguring on-street parking in Uptown to make space for bike lanes, as proposed in the adopted Transportation System Plan.

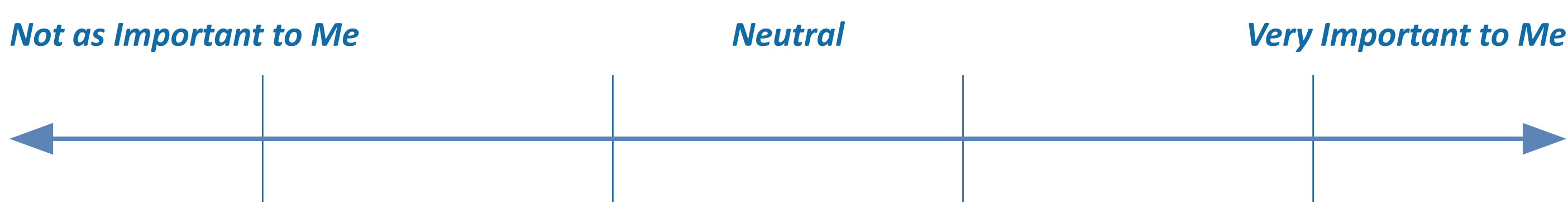


WHAT IS GREEN INFRASTRUCTURE?

Green infrastructure is any infrastructure element that filters and absorbs stormwater where it falls. Elements of green infrastructure can include street trees, planter boxes, bioswales, permeable pavement, green streets, and green roofs. Green infrastructure can be built into street improvements like the bioswales pictured below.



Requiring green infrastructure, like street trees or stormwater planters, to be built with new development.



Are there any other transportation related topics that should be considered as part of this project? Use a sticky note to share your thoughts below.