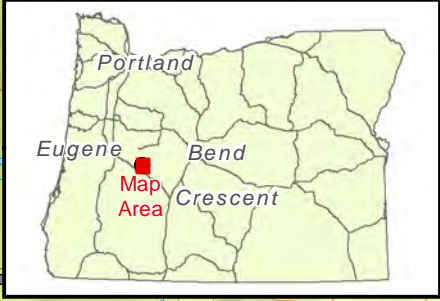
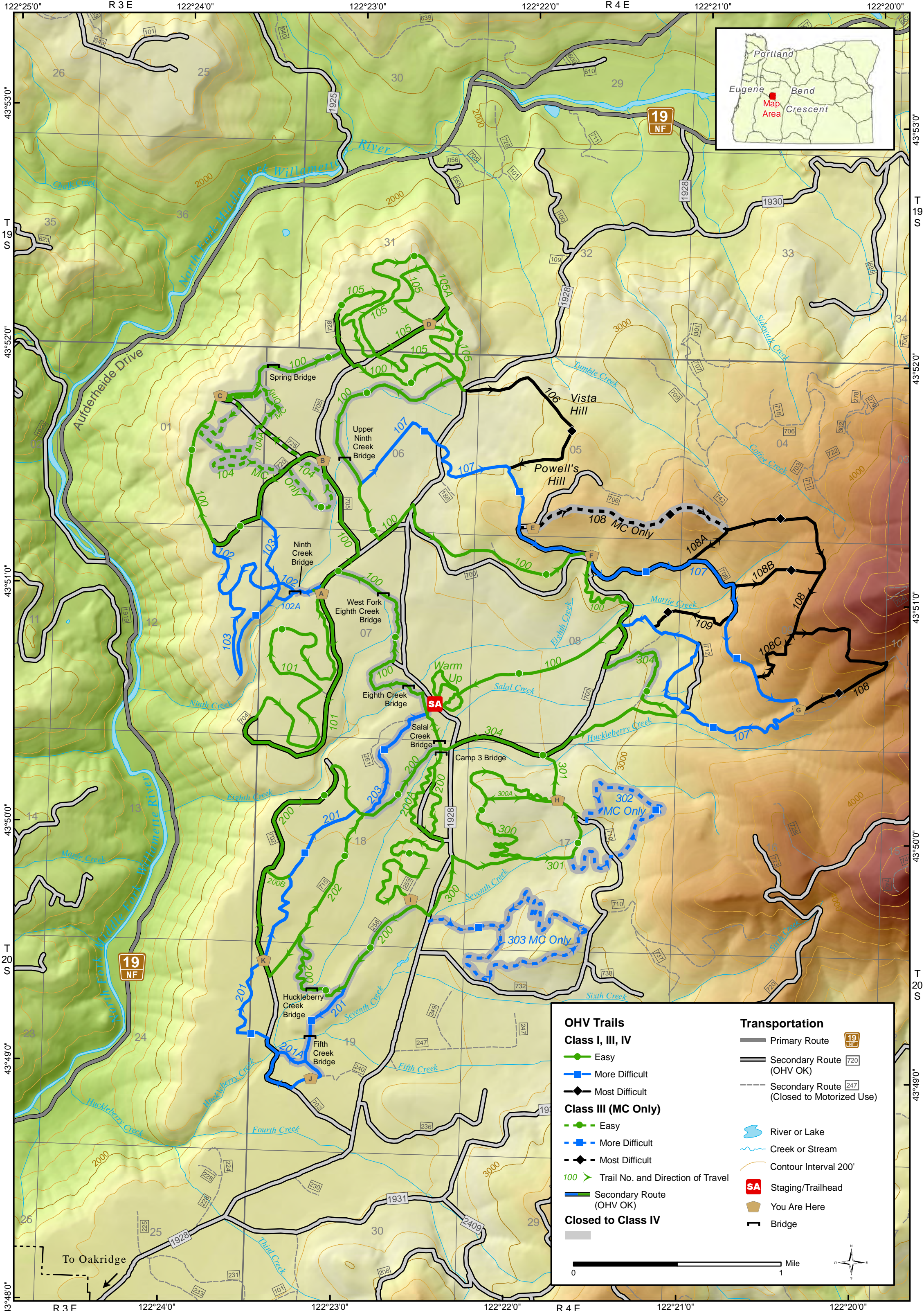




HUCKLEBERRY FLATS MOTORIZED TRAIL SYSTEM

WILLAMETTE NATIONAL FOREST MIDDLE FORK RANGER DISTRICT



OHV Trails		Transportation	
Class I, III, IV		Primary Route	19 NF
Easy	Green line with dots	Secondary Route (OHV OK)	720
More Difficult	Blue line with squares	Secondary Route (Closed to Motorized Use)	247
Most Difficult	Black line with diamonds	River or Lake	Blue wavy line
Class III (MC Only)		Creek or Stream	Blue dashed line
Easy	Green dashed line with dots	Contour Interval 200'	Orange line
More Difficult	Blue dashed line with squares	Trail No. and Direction of Travel	100 >
Most Difficult	Black dashed line with diamonds	Secondary Route (OHV OK)	Green line
100 >	Trail No. and Direction of Travel	Closed to Class IV	Grey line
SA	Staging/Trailhead	Bridge	Black line with T-junction
You Are Here	Orange square		